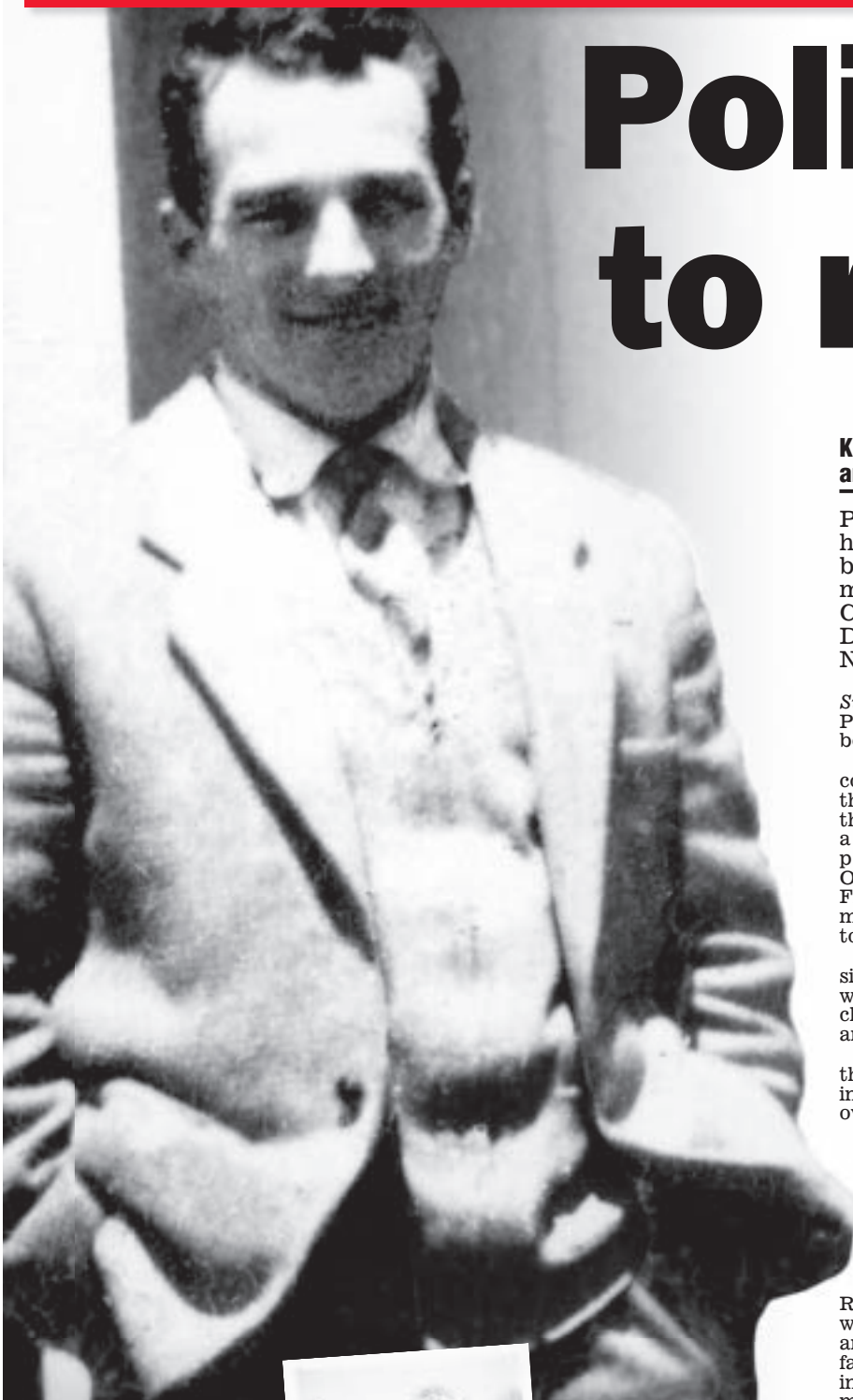


New twist takes unsolved murder case to Northern Ireland

Police chase tip to retrieve DNA



Keith Moor, Carly Crawford and Lucy Carne

POLICE believe they may have tracked down two blood relatives of Victorian mass murderer Elmer Crawford and are seeking DNA from the two men in Northern Ireland.

The tip came after the *Herald Sun* this week revealed Victoria Police believes an unidentified body in the US is that of Crawford.

The *Herald Sun* has also discovered that one of the identities the dead man in the US used was that of a murderer who shot dead a two-year-old boy and partly paralysed her mother in Oklahoma. Cameron Harold Frysinger was convicted of the murder and shooting with intent to kill in 1983.

Crawford has been on the run since he slaughtered his pregnant wife Theresa, 35, and their three children, Kathryn, 13, James, 8, and Karen, 6, in 1970.

He electrocuted and bashed them with a hammer before pushing their bodies in the family car over a cliff at Port Campbell.

A caller to Crime Stoppers who saw this week's publicity about the case gave police the names of two men he claimed were still alive in Northern Ireland and were blood relatives of Crawford.

Homicide squad detective Ron Iddles said the caller, who was also from Northern Ireland and said he knew the Crawford family, supplied enough specific information to suggest the information was genuine.

"We are in the process of contacting the two men to establish if they are relatives and we will be seeking to get DNA from them so we can compare it with the DNA of the unidentified body in the US to see if the dead man is Crawford," Det-Sen-Sgt Iddles said.

The *Herald Sun* has also spoken to two women who claim to be related to Crawford.

One of the women, Trisha Crawford, 59, who lives in Cambridge, northeast of London, believes she may be Elmer Crawford's daughter.

The other woman, Betty Anstis, 70, of West Palm Beach, Florida, believes she might be Crawford's



Victims: the Crawford family car (above) and the three children (below) who died with their mother.



Tuesday's Herald Sun

Yesterday's Herald Sun

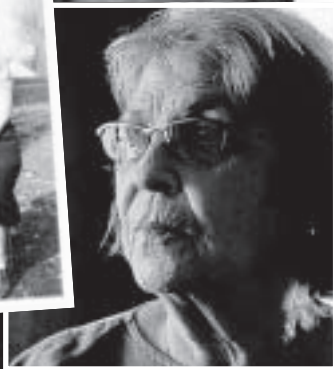
If their DNA doesn't match, the dead man could still be Crawford as they may not be related to him. If it does match then all it proves is that they are related to the dead man, which would be a strong indication the dead man is Crawford, but it still wouldn't be a certainty.

Ms Crawford told the *Herald Sun* she was happy to provide her DNA, saying: "I want to help solve this."

Ms Anstis said she was also prepared to provide her DNA to police.

Facial recognition experts from Victoria Police and the FBI's academy in Quantico, Virginia, have carried out extensive tests on photographs of Crawford and the dead man in the US and concluded he is almost certainly Crawford.

But that technology is not an exact science.



Tangled web: Elmer Crawford (top), and (above from left) his possible daughter Trisha Crawford, what is claimed to be Elmer Crawford as a child with his mother, and American Betty Anstis.

heraldsun.com.au

Audio: Trisha Crawford says learning about her possible father was 'painful'
Multimedia special: How he did it, why he did it

We will beat any airfare quote or you fly free.*



London Return
\$1877*
from
Business Class return from \$4693*

	Economy return from	Business return from		Economy return from	Business return from
Auckland	\$364*	\$1411*	Kuala Lumpur	\$503*	\$3064*
Bali	\$706*	\$2033*	Los Angeles	\$907*	\$4396*
Bangkok	\$669*	\$2443*	Paris	\$1826*	\$5638*
Fiji	\$701*	\$1310*	Phuket	\$681*	\$2997*
Hong Kong	\$975*	\$2780*	Singapore	\$567*	\$3042*

FLIGHT CENTRE®
Unbeatable

LOWEST AIRFARE GUARANTEE
We will beat any airfare quote or you fly free.*

flightcentre.com.au | your postcode to 131 600 and we'll call you. | 1300 727 365

*Applies to genuine quotes from airlines and Australian registered businesses and websites for travel that originates/departs from Australia. Quote must be in writing and must be presented to us prior to booking. Fare must be available and able to be booked by the general public when you bring it to us. Fares available due to membership of a group or corporate entity or subscription to a closed group are excluded. Must be for same dates and flight class. We will beat price by \$1.00 and give you a \$20 voucher. For full terms and conditions see flightcentre.com.au. *Travel restrictions and conditions apply. Please ask us for further details. Prices and taxes are correct as at 13 Jul 10 and are subject to change without notice. Prices quoted are on sale until 21 Jul 10 unless otherwise stated or sold out prior. Prices are per person and are subject to availability. Accommodation (if included) is based on twin share. Seasonal surcharges and blackout dates may apply depending on date of travel. Prices shown are fully inclusive of taxes, levies, government charges and other applicable fees. Airfare not included unless otherwise stated. Where airfare is included, additional taxes specific to your flight routing may apply and/or may not include checked luggage (which can incur additional charges). Payments made by credit card will incur a surcharge. Prices shown are for payments made by cash in store. Advertised price includes any bonus nights. Minimum/maximum stay restrictions may apply. Blackout periods may apply. Weekend surcharges may apply. Business Class Airfares: Some fares may include mixed classes on domestic sectors. FROM MELBOURNE. Flight Centre Limited (ABN 25 003 377 188) trading as Flight Centre. Licence No. 31089. nhs_15jul_8x7_fc